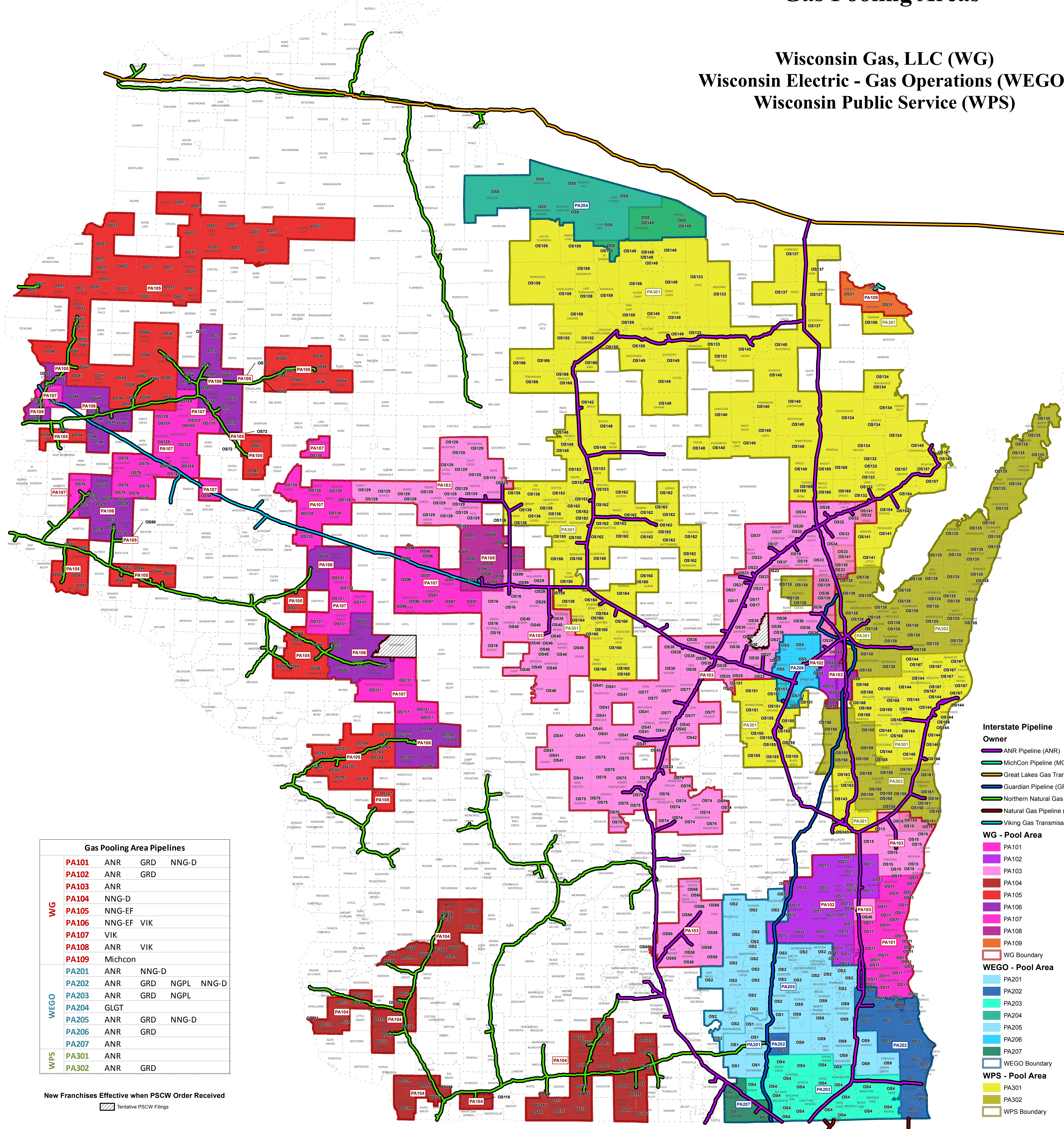


Gas Pooling Areas

Wisconsin Gas, LLC (WG)
 Wisconsin Electric - Gas Operations (WEGO)
 Wisconsin Public Service (WPS)

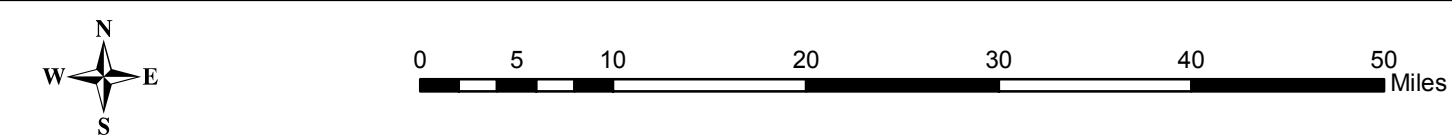
Pooling Area (PA)	Operating System (OS)	Operating System Name
PA101	OS11	Metro Milwaukee
PA102	OS12	Richfield
	OS13	Hartford
	OS28	Little Chute
PA103	OS15	Fredonia
	OS16	Arpin
	OS17	Bear Creek
	OS19	Bonduet
	OS20	Cecil
	OS21	Clintonville
	OS22	Dale/Medina
	OS23	Embarrass
	OS24	Freedom
	OS25	Fremont
	OS26	Gillett
	OS27	Hortonville
	OS29	Milladore
	OS30	New London
	OS32	Oconto Falls
	OS33	Pulaski/Angelica
	OS34	Pulifer
	OS35	Rudolph
	OS36	Seymour/Black Creek
	OS37	Shawano
	OS38	Waupaca
	OS39	Weyauwega
	OS40	Wisconsin Rapids
	OS41	Adams/Friendship
	OS42	Redgranite
	OS43	Neshkono
	OS46	Jackson
	OS58	Waterloo
	OS65	Sun Prairie
	OS66	Columbus
	OS74	Fairwater
	OS75	Oxford
	OS76	Princeton
	OS77	Wild Rose
	OS99	Auburdale
	OS115	Athens/Milan
	OS129	Abbotsford
PA104	OS108	Richland Center
	OS109	Avoca/Blue River
	OS110	Mount Hope
	OS112	Fennimore
	OS113	Lancaster
	OS114	Cuba City
	OS116	Shullsburg
	OS117	Browtown
	OS118	Monroe/Chalet Cheese
	OS122	Monticello
	OS123	Belleville
	OS124	Albany
	OS125	Evansville
	OS126	Brohead
PA105	OS127	New Glarus
	OS147	Balsam Lake
	OS148	Centuria
	OS149	Clayton
	OS53	Frederic
	OS54	Star Prairie
	OS55	Luck
	OS56	Ladysmith
	OS57	Grantsburg
	OS59	Turtle Lake
	OS60	Cumbehand
	OS61	Milltown
	OS62	Almena
	OS63	Twin Town Cheese
	OS67	Bloomer
	OS68	Bruce
	OS72	New Auburn
	OS73	Weyerhaeuser
	OS80	Elmwood
	OS81	Ellsworth
	OS82	Hager City
	OS83	Plum City
	OS84	Arkansaw
	OS85	Durand
	OS87	Osepe
	OS88	Pigeon Falls
	OS89	Blair
	OS90	Taylor
	OS102	West Salem
	OS103	Bangor
	OS104	Sparta
	OS105	Fort McCoy
PA106	OS107	Cashon
	OS44	Amery
	OS45	Clear Lake
	OS50	Osceola
	OS52	St. Croix Falls
	OS64	Barron
	OS69	Cameron
	OS70	Chester
	OS71	Rice Lake
	OS79	Baldwin Cady
	OS86	Augusta
	OS91	Hixton
	OS92	Black River Falls
	OS93	Merrillan
PA107	OS106	Tomah
	OS11	Dresser
	OS78	Boycerville
	OS94	Colfax
	OS96	Neillsville
	OS97	Chili
	OS128	Wheeler
	OS130	Cadott
PA108	OS131	Fairchild/Warrens
PA109	OS98	Marshfield
PA201	OS31	Niagara/Aurora
PA202	OS1	Western 500
	OS3	Lakeshore
	OS10	La Grange
PA203	OS4	Southern
PA204	OS8	North Border
PA205	OS2	Western 300
	OS9	Rochester
PA206	OS5	Fox Valley
PA207	OS7	Sharon-Clinton
PA301	OS132	Coleman
	OS133	Crandon
	OS134	Crooked Lake
	OS136	Edgar
	OS137	Goodman
	OS139	Junction City
	OS140	Laona
	OS141	Lena
	OS142	Lincoln Hills
	OS143	Long Lake
	OS144	Manitowoc
	OS145	Marinette
	OS146	Meeme
	OS147	Menominee
	OS148	Merrill
	OS149	Monico
	OS150	Mosinee
	OS151	Neenah
	OS152	Nokomis
	OS153	North Wausau
	OS154	Oconto
	OS155	Oshkosh
	OS156	Pembine
	OS157	Peshigo
	OS159	Rhinelander
	OS160	Rosholt
	OS162	South Wausau
	OS163	St. Cloud
	OS164	Stevens Point
	OS165	Suring
	OS166	Tomahawk
	OS167	Two Rivers
	OS168	Valders
	OS169	Wrightstown
PA302	OS135	Denmark to Sturgeon Bay
	OS138	Green Bay
	OS158	Plymouth and Chilton
	OS161	Sheboygan



Gas Pooling Area Pipelines			
PA101	ANR	GRD	NNG-D
PA102	ANR	GRD	
PA103	ANR		
PA104	NNG-D		
PA105	NNG-EF		
PA106	NNG-EF	VIK	
PA107	VIK		
PA108	ANR	VIK	
PA109	Michcon		
PA201	ANR	NNG-D	
PA202	ANR	GRD	NGPL
PA203	ANR	GRD	NGPL
PA204	GLGT		
PA205	ANR	GRD	NNG-D
PA206	ANR	GRD	
PA207	ANR		
PA301	ANR		
PA302	ANR	GRD	

New Franchises Effective when PSCW Order Received
 Tentative PSCW Filings

- Interstate Pipeline Owner**
- ANR Pipeline (ANR)
 - MichCon Pipeline (MCP)
 - Great Lakes Gas Transmission (GLGT)
 - Guardian Pipeline (GRD)
 - Northern Natural Gas (NNG)
 - Natural Gas Pipeline (NGPL)
 - Viking Gas Transmission (VIK)
- WG - Pool Area**
- PA101
 - PA102
 - PA103
 - PA104
 - PA105
 - PA106
 - PA107
 - PA108
 - PA109
 - WG Boundary
- WEGO - Pool Area**
- PA201
 - PA202
 - PA203
 - PA204
 - PA205
 - PA206
 - PA207
 - WEGO Boundary
- WPS - Pool Area**
- PA301
 - PA302
 - WPS Boundary



Date Created: 7/12/2018
 Date Plotted: 2/4/2020